



AHT IEVOLI AMARANTH

THE VESSEL IS EQUIPPED AND FITTED FOR THE FOLLOWING CONTINGENCY SERVICES:

- FIRE FIGHTING
- MOB OPERATIONS
- STAND BY DUTIES
- SUPPLY RESCUE VESSEL
- ANCHOR HANDLING
- TOWING/PUSHING
- RESEARCH SHIP

MAIN DESCRIPTION

Year Built : February 2013
 Vessel built : SELAH Shipyard – Tuzla (Turkey)
 Type : Rescue / Standby / Anchor Handling / Tug / FiFi 1
 Classification : **ABS** - A1, Towing Vessel, Safety Standby Service GR B (24), Anchor Handling Vessel, Fire Fighting Vessel Class 1, Offshore Support Vessel, Oil Recovery Vessel Class 1, AMS, ACCU, DPS-2, TCM, ENVIRO
 Additional Class : RINA
 Port of registry : Ijmuiden
 Flag : Dutch
 Call Sign : PCSY
 MMSI : 246911000
 IMO Nr. : 9637363
 Certificates : ABS - Load Line and Tonnage Certificates (Suez), SOLAS Certificates, ISPP, IOPP, IAPP,SMC, Marpol Annex I,II,IV,V, Safety Radio Certificate, ISPS Certificate

MAIN DIMENSIONS

Length o.a. : 65,72 m
 Length b.p.p. : 60,50 m
 Breath : 15,50 m
 Summer draught : 6,00 m
 Gross tonnage : 2732 t
 Net tonnage : 820 t

CARGO CAPACITY

Dead weight : 1450 t

DECK SPACE / STRENGTH

Length : 28 m
 Breath : 12 m
 Total : 340 m2
 Max deck load : 750 t
 Deck strength m2 : 7,5 t/ m2

TANK CAPACITY

H.F.O. : 360 m3
 M.G.O. : 630 m3
 Fresh water : 290 m3

ENGINE AND PROPULSION

Main engines : MAK 8M32C
 2 x 4000 Kw at 600 rpm
 Gear : 2 Main Gear
 Propellers : BCP Dia. 3400mm
 Variable pitch in fixed nozzles / Feathering type
 Tunnel thruster : 2 Tunnel Bow Thruster
 2 x 600 Kw
 1 Tunnel Stern Thruster
 1 x 600 Kw
 Steering gear : Hydroster Ship Machinery Works Ltd
 Bollard pull : Continuous Rated 134 t
 Maximum Rated 149 t

AUXILIARIS

Main generator : - Shaft Generators
 2 x 1400 Kw
 - 2 x DDGG 400 Kw
 Port/emergency generator : - A/S Emergency Genset
 100Kw/125 KVA 3x380V 50Hz

DECK EQUIPMENT (McGregor/Cargotec)

Towing / anchor handling winch : - 1 Towing Drum
 Wire 1500 m / 70 mm
 Line Pull 150T - 15m/min (1st speed)
 Brake Holding 300T
 - 1 Anchor Handling Drum
 Wire 1000 m / 86 mm
 Line Pull 200T - 12m/min (1st speed)
 Brake Holding 400T
 - All drums are declutchable
 - Automatic tension compensator
 - 2 Gypsies for 3" and 3 ¼" rig chain
 Spooling Device : 20 t Spooling Device for towing drum
 Capstan : 2x10t, Diam:500mm
 Crane : 6ton/15m, Knuckle type
 Tugger winch : 2 x 12 T 15 m/min
 Brake capacity 15 t
 Windlass : 83,8 KN 09 m/min
 Brake capacity 403 KN
 Chain dia. 40mm
 Shark Jaw : SWL 400 T
 Operated from bridge and locally
 Towing pins : Angular Type – SWL 300 T
 Operated from bridge and locally
 Stern Roller : Diam.2500x5700mm
 SWL 320 T

NAVIGATION EQUIPMENT

1 x Radar,JRC Marine ARPA X-band
 2 x high resolution color display, radar plotter 21"
 1 x Radar, JRC Marine ARPA S-band
 1 x Radar repeater (slave radar) at aft wheelhouse console
 1 x GPS JRC
 1X DGPS JRC
 1 x Navtex JRC
 1 x Echo Sounder JRC ESOND
 1 x Speed Log JRC
 1 x AIS JRC
 2 x Gyro Compasses YOKOGAWA
 1 x Magnetic Compass C-PLATH
 1 x Autopilot NAVITRON
 2 x Wind Speed/Direction SENSORS
 1 x Weather Fax JRC

COMMUNICATION EQUIPMENT

GMDSS Station Area A1+A2+A3
 - 1 HF/MF DSC sailor
 - 3 Emerg portable VHF GMDSS JOTRON
 - 2 VHF DSC JRC
 - 3 portable VHF ICOM
 - 2 Inmarsat C JRC (SSAS & LRIT)
 - 1 Radio telex Felcom 15
 - 1 EPIRB JOTRON
 - 2 SART JOTRON
 - 1 BNWAS NAVITRON
 - 1 Public Address System

ACCOMODATION

1 man cabins, crew : 17 x 1 = 17
 2 man cabins, offer : 6 x 2 = 12
 Survivals : 2 x 4 = 08
 Hospital : 1 x 2 = 02
 Dispensary : 1 x 1 = 01
 Total number of bunks : **40**

1 Meeting Room (10 persons)
 2 x Messrooms (30 persons)
 2 x Daily Rooms

Dynamic Positioning System (DP-2)

Maker: KONGSBERG
 Type: K-Pos DP-21 Dual redundant positioning system
 Equipped with Trunk & valve for easy future installation of HighPrecision Acoustic Positioning system (HiPAP, Kongsberg 501)

FIRE FIGHTING

FiFi, class I
 The fire fighting system consists of the following main components:
 - 2 off fire-fighting centrifugal pumps FFS SNT250/550
 capacity: 1742 m³/h head: 11,8 mlc 1800 rpm / 790 Kw
 - 2 single/dual flow monitors FFS 1200/300LB
 joystick controlled from bridge
 capacity: 1200 m³/h - 10,0 bar
 throw length – capacity full : 120 m
 throw length – capacity reduced : 75 m
 - 1 foam pump DPVSF 18-100
 18 m³/h - 18,5 Kw head: 185 mlc 3420 rpm
 - 2 fog monitors for own protection type ABS
 Water spray system with standard tug nozzles
 900 m³/h at 7,6 bar

RESCUE AND LIFESAVING EQUIPMENT

1 x Rescue Boat NORSAFE Matrix (4,50 x 1,96 x 1,75m)
 Capacity: 06 persons
 Equipped with outboard engine (20Hp)
 4 x Liferafts, capacity 20 persons/each
 2 x Search Light remotely controlled from bridge
 6 x Lifebuoys provided with strobe lights and lifelines
 1 x Hospital with 2 treatment bench, racks for stretchers,
 Desk, medicine, poison locker
 1x Dispensary with medical equipments / medicine in accordance
 with Flag's State and International requirements

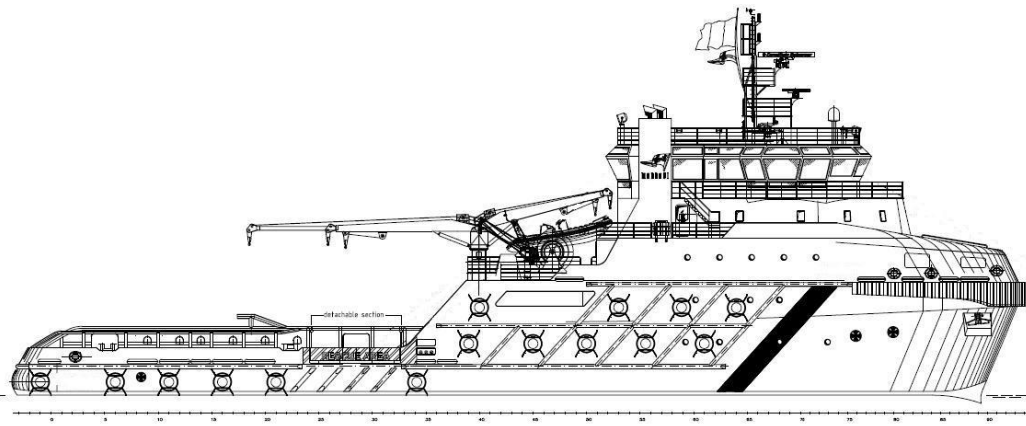
This specification is subject to alteration without prior notice



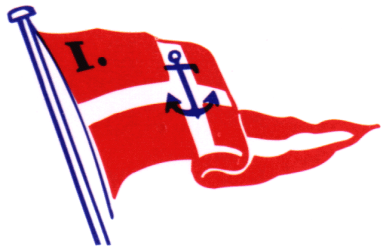
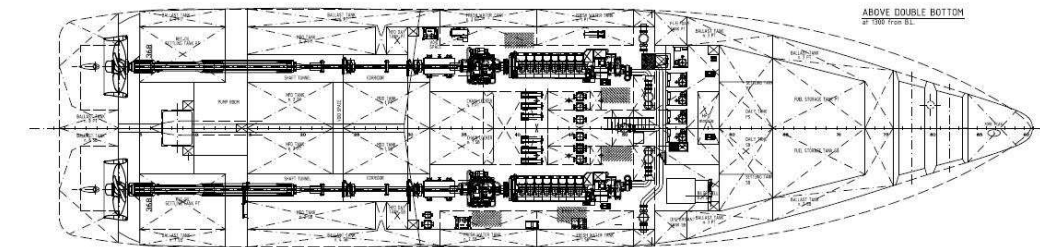
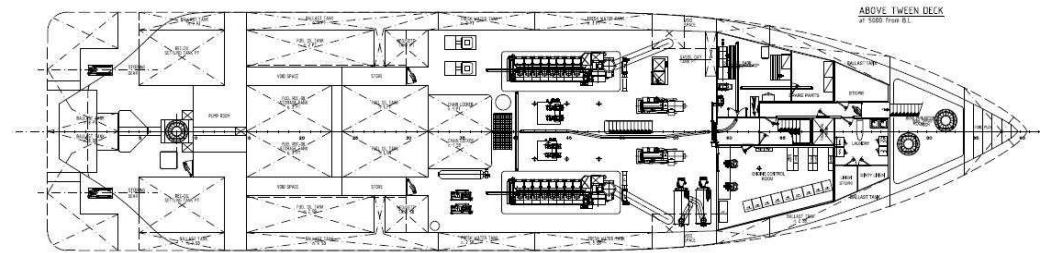
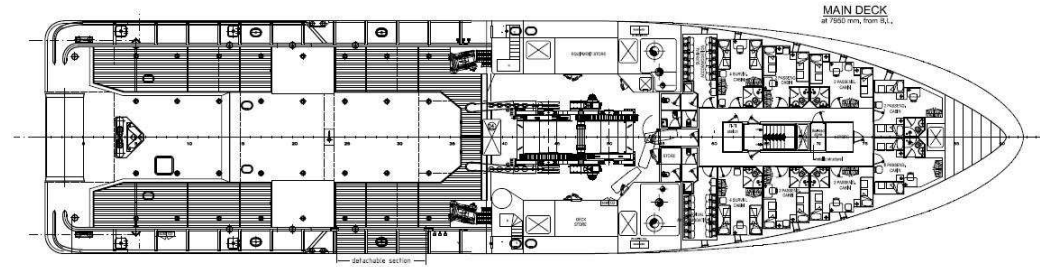
MARNAVI OFFSHORE S.r.l.

OPERATION & TECHNICAL MANAGER

Ievoli Amaranth - Anchor Handling Tug Vessel



Whilst care has been taken in the preparation of this document, the data and/or information referred to herein are purely indicative and are not contractually binding. They must be checked with reference to the specific operations and are subject to change. No liability is accepted by the owners for any errors which may exist in this document.



MARNAVI S. P. A.
TRASPORTI MARITTIMI