



MPSV IEVOLI COBALT

MPSV H69 - MMC 879L CD

THE VESSEL IS EQUIPPED AND FITTED FOR THE FOLLOWING CONTINGENCY SERVICES:

- FIRE FIGHTING
- SUPPLY DUTIES
- ROV AND DIVING SHIP
- SUBSEA ACTIVITIES

MAIN DESCRIPTION

Year Built : Delivery October 2016
 Vessel built : Selah Shipyard – Tuzla (Turkey)
 Type : Standby Platform Supply Vessel / FiFi 1 / DP2
 Classification : BV - I *Hull *Mach1 - Supply Vessel, Oil Recovery Ship Second-Line; Fire Fighting Ship 1 waterspraying; LHNS / SP (60); Unrestricted Navigation; *AUT-UMS, *Dynapos AM/AT-R; Cleanship, Inwatersurvey
 Additional Notes : *SPS Code 2008 – Resolution MSC.266(84)
 Port of registry : Naples n. 569
 Flag : Italian
 Call Sign : I B O K
 IMO Nr. : 9736872
 MMSI Nr. : 247363700
 Regulations : BV, COLREG, Load Line, SOLAS Certificates, Tonnage Certificate, Marpol Annex I,II,IV,V, VI, IMO A493-494, IMO A749 (18), IMO 673 (16), IMO A325, ISPS Code, MSC 645, MSC 664, MSC 235 (82)

MAIN PARTICULARS

Design : MMC 879L CD
 LOA : 83,83 m
 Length PP : 81,50 m
 Breath Moulded : 16,80 m
 Depth Moulded : 7,40 m
 Summer Draft : 5,00 m
 Gross tonnage : 4495 Tonn
 Net tonnage : 1589 Tonn

PERFORMANCE

Max Speed : 14,00 Knts - 22/24 Tonn/day
 Cruise Speed : 10-11,50 Knts - 12/14 Tonn/day
 Eco Speed : 09-10,00 Knts - 08/10 Tonn/day
 DP h24 : 06/07 Tonn/day
 Port consumption : 0,75 Tonn/day
 Type of Fuel : M.G.O.

CAPACITIES

Dead weight : 4000 t (approx)
 Deck cargo : 1600 Tonn
 Cargo deck dimensions : 51,60 x 14,00 m
 Deck area : 500 m²
 ROV Hangar : 60 m²
 Deck strength : 5 t/ m²
 Freezer Room : Available

DECK EQUIPMENTS

Capstans : 2 x 10 Tonn
 Tugger Winches : 2 x 10 Tonn
 Offshore Subsea : TTS - GPCKO 2000-50-20 AHC
 Knuckle Boom Crane : Main Hook
 AHC - SWL 25 Tonn @ 19m
 1000 mtrs lifting height
Aux. Hook
 SWL 5 Tonn @ 18,5m
 500 mtrs lifting height
 Deck Crane : 2 Tonn @ 10mt
 Stern A-Frame : SWL 15 Tonn
 Removable bulwarks : Port and Starboard side
 Gate Frame 36 / 43
 Total length 4720 mm

CARGO CAPACITIES

Water Ballast / Drill Water (*) : 1602 m³
 Fresh Water (*) : 1150 m³
 Fuel Oil (*, FP>60°C) : 800 m³
 Liquid Mud (*)(***) : 1272 m³
 Brine (**)(***) : 1272 m³
 Dry Bulk (*) : 300 m³
 Methanol (*) : 206 m³
 ORO 2nd Line (**) : 635 m³
 Base Oil (**) : 950 m³
 Cargo and Ballast Monitoring System : IAS - Fitted
 Tank washing : Available
 Agitator LM Tanks System : Available
 Sewage Treatment Unit : Available

* Resolutions A673(16) Annex 1 carried out in LM/O.R.O Tanks
 ** Dual Purpose tank
 *** Multipurpose tank: LM/O.R.O/Base Oil

CARGO PUMPS

Drill water : 2 x 100/56 m³/h at 9/2,2 Bar
 Potable water : 2 x 100 m³/h at 8 Bar (0-100%)
 Fuel oil : 2 x 100 m³/h at 9 Bar (0-100%)
 Base Oil : 100 m³/h at 9 Bar (0-100%)
 Liquid mud / Brine : 3 x 75 m³/h at 14 Bar (0-100%)
 Liquid mud / ORO : 1 x 75 m³/h at 14 Bar screw (0-100%)
 Methanol : 2 x 75 m³/h at 9 Bar (0-100%)

DRY CARGO CAPACITIES

4 pressure tanks for bulk : 644 t
 cement/barite : 300 m³
 Compressor capacity : 1200 m³/h
 Work pressure : 5,6 bar
 Discharging capacity : 2 x 100 t/h at 90 m head
 Pipe and manifold : 2 x 5" Weco

PIPE LINE CONNECTIONS

Dry Bulk : 5" Hammer Lug Union (Weco) Male
 Liquid Mud : 5" Avery Hardoll Male
 Fuel oil : 5" Avery Hardoll Male
 Potable Water : 5" Hammer Lug Union (Weco) Male
 Ballast Drill Water : 5" Hammer Lug Union (Weco) Male
 Methanol : 5" Avery Hardoll Male
 Reducers Connections : 4" and 5" for each connection type

GENERATORS AND PROPULSION

Main generators Power : MTU - 4x 16V4000M33S
 4 x 2080 kW @ 1800 rpm
 Propellers : RR - 2 x 2300 kW Azimuth Thrusters
 Dia. 2800mm - Variable speed
 Fixed pitch in nozzles
 Tunnel thruster : RR - 2 Tunnel Bow Thruster
 2 x 900 Kw / 1224 Bhp
 Emergency/Harbour generator : 1 x 375 kVA

DP SYSTEM - MANOEUVRING

DP Class : II
 DP Type : Kongsberg
 Gyro Compass : 3 Navigat X Mk1
 Position Reference Units : 3 x DGPS + 3 Wind Sensor
 Laser Reference : 1 x Cyscan Mk4
 Acoustic Reference : 1 x HiPap 500 + 1 Trunk available
 Motion Reference : 3 x MRU
 ERN : 99.97.84.63
 Joystick : Kongsberg C-Joy / Fully integrated
 Serviceable from various wheelhouse positions + 1 portable

NAVIGATION EQUIPMENT

- 1 x Radar, JRC JMA-5300, ARPA X-band
 - 1 x Radar, JRC JMA-5300, ARPA S-band
 - 2 x high resolution color display, radar plotter 19"
 - 1 x Radar repeater (slave radar) at aft wheelhouse console
 - 2 x JRC JAN-2000 MK2 ECDIS
 - 2 x GPS JRC, JLR-7500
 - 1 x Navtex JRC
 - 1 x Echo Sounder JRC JFE-380-25
 - 1 x Doppler Speed Log – JLN-550
 - 1 x AIS, JRC JHS-183
 - 1 x Magnetic Compass PLATH
 - 1 x Navitron AUTOPILOT
 - 1 x Doppler Log - Off Course Alarm JRC
 - 1 x BNWAS/1, NAVITRON
 - 1 x Voyage Data recorder JYV-1900

CCTV coverage for all key areas with display at Wheelhouse and ECR

COMMUNICATION EQUIPMENT

GMDSS Station Area A1+A2+A3
 - V-SAT SAILOR Data/Mail transfers/VoIP phone
 - 1 FBB 500 - VSAT backup
 - 1 MF/HF JRC DSC +ATIS
 - 2 VHF DSC JRC
 - 3 Emergency VHF JOTRON TRON
 - 2 INMARSAT C, JRC, JUE-85
 - 1 INM-C, SSAS, SAILOR
 - 1 EPIRB JOTRON TRON
 - 2 SART JOTRON TRON
 - 1 Public Address System
 - Talk Back System between DP station, Control Rooms and ECR

ACCOMODATION

Type of cabins	No. of cabins	No. Of berths
1 man cabins	4	4
2 man cabins	23	46
Hospital / Dispensary	1	2
Quarantine Cabin	1	1
Total number of bunks		50 + 3

Allowable to accommodate 8 pax more through an Accommodation modules.

Total POB Vessel's capacity : 57 + 3 Persons on board

Meeting Room : Fitted
 Client Office : Fitted
 Processing Office : Fitted
 Wet Laboratory : Fitted
 Ship's Office : Fitted
 Recreation Rooms : Gym, Day room Lounge, Smoking Room
 Sky Lobby : Fitted

FIRE FIGHTING

FiFi, class I

The fire fighting system consists of the following main components:

- 2 off fire-fighting centrifugal pumps OGF250X350 COMBI capacity: 1650 m³/h head: 130 mlc 1800 rpm / 800 Kw
- 2 single/dual flow monitors joystick controlled from bridge capacity: 1200 m³/h - 12,0 bar
 throw length – capacity full : 140 m
- Water spray system


RESCUE AND LIFESAVING EQUIPMENT

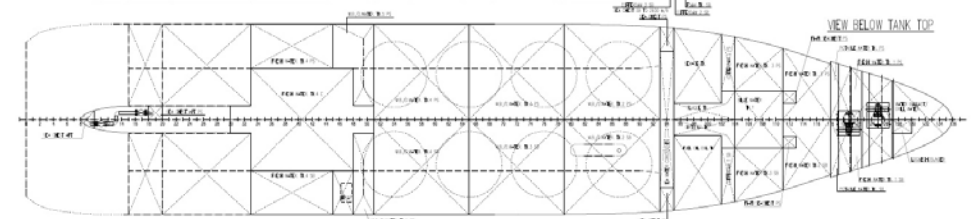
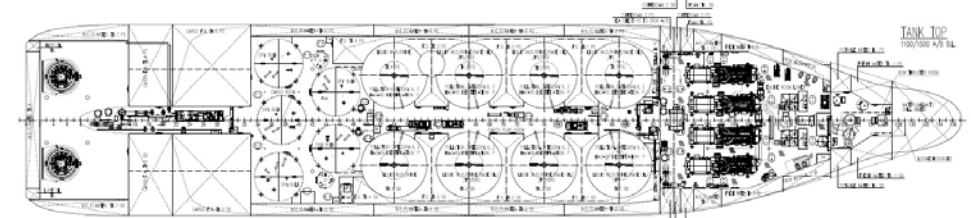
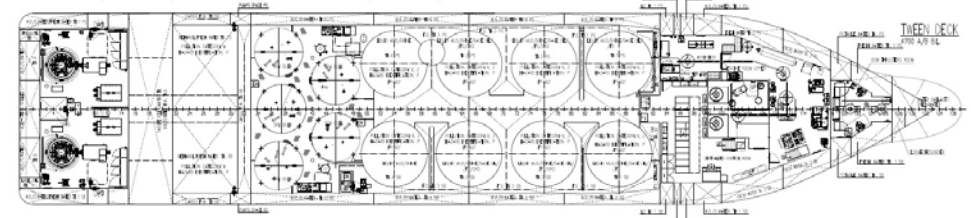
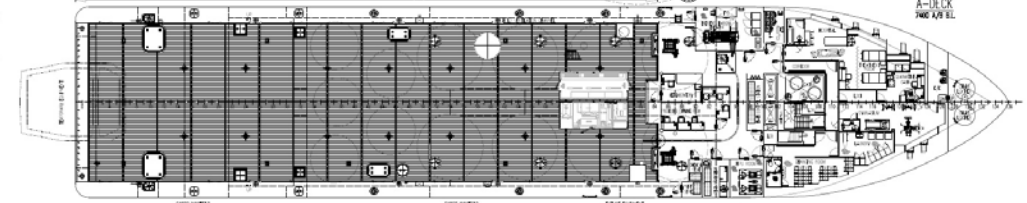
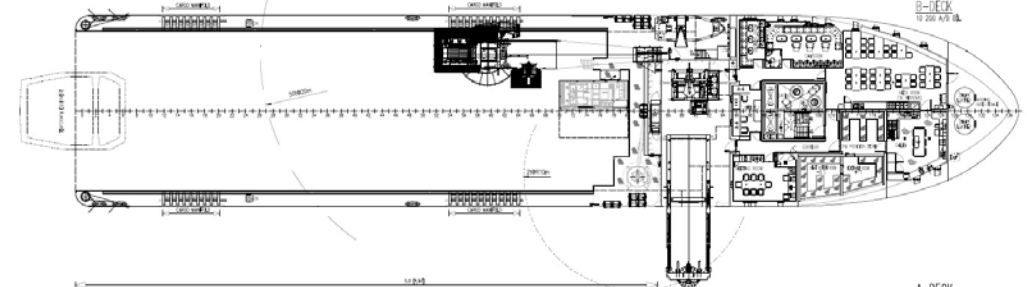
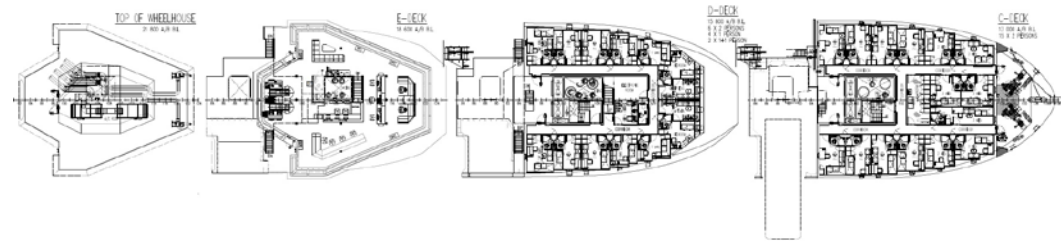
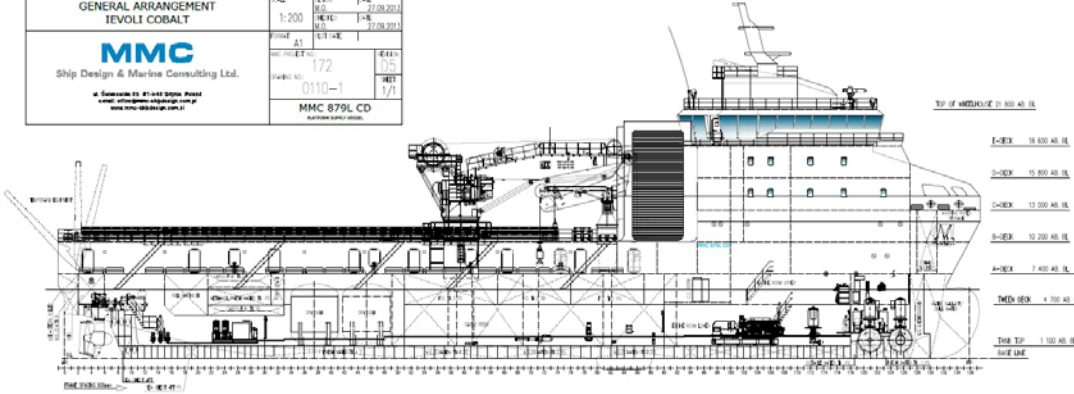
1 x Fast Rescue Boat (8 pax)
 6 x Liferafts (25 pax each)
 2 x Search Light remotely controlled from bridge
 6 x Lifebuoys provided with strobe lights and lifelines
 1 x Hospital with treatment bench, racks for stretchers,
 Desk, medicine, poison locker
 1x Dispensary with medical equipments / medicine in accordance
 with Flag's State and International requirements
 1 x Quarantine Cabin

This specification is subject to alteration without prior notice

Ievoli Cobalt - MMC 879L CD MPSV Design

Multi Purpose Supply Vessel

NAME: Ievoli Cobalt		DATE: MAR/04	
OWNER: MARNAVI	DESIGNER: MMC	CLASS: IACS	STATUS: 100%
GENERAL ARRANGEMENT IEOVOLI COBALT			
 Ship Design & Marine Consulting Ltd.		SCALE: 1:200	NO. OF SHEETS: 27/29
PROJECT NO: 172		NO. OF SHEETS: 05	DATE: 27/09/2003
DRAWING NO: 0110-1		NO. OF SHEETS: 1/1	DATE: 27/09/2003
MMC 879L CD		MPSV	



Whilst care has been taken in the preparation of this document, the data and/or information referred to herein are purely indicative and are not contractually binding. They must be checked with reference to the specific operations and are subject to change. No liability is accepted by the owners for any errors which may exist in this document.



MARNAVI S. P. A.
TRASPORTI MARITTIMI