




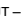
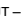
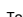




IEVOLI BLACK

AHTS IEVOLI BLACK – NED 8167L

THE VESSEL IS EQUIPPED AND FITTED FOR THE FOLLOWING CONTINGENCY SERVICES:

- FIRE FIGHTING
- MOB OPERATIONS
- STAND BY DUTIES
- SUPPLY DUTIES
- ANCHOR HANDLING
- TOWING/PUSHING
- RESEARCH SHIP
- UNDERWATER ACTIVITIES

MAIN DESCRIPTION

Year Built	: May 2010
Vessel built	: Remontowa – Gdansk (Poland)
Type	: Standby / Anchor Handling / Tug / Supply Vessel / FiFi 1 / DP2
Classification	: RINA - C  Tug, Supply Vessel, Fire Fighting 1 – Water Spraying, Unrestricted Navigation
Additional Notes	:  AUT – UMS,  DYNAPOS AM/AT
Additional Class	: ABS Class notation  A1, Towing Vessel, Fire Fighting Vessel Class 1, Offshore Support Vessel AH,  AMS,  ACCU,  DPS-2
Port of registry	: Naples nr. 546
Flag	: Italian
Call Sign	: ICMP
IMO Nr.	: 9439242
Certificates	: RINA C  , ABS, Load Line and Tonnage Certificates (Suez), SOLAS Certificates, ISPP, IOPP, IAPP, SMC, Marpol Annex I,II,IV,V, Safety Radio Certificate, ISPS Certificate

MAIN DIMENSIONS

Design	: NED 8167L
Length o.a.	: 70,00 m
Length b.p.p.	: 63,60 m
Breath	: 15,50 m
Summer draught	: 5,10 m
Gross tonnage	: 2283 t
Net tonnage	: 684 t

HEIGHTS from B.L.

Max	: 28,10 m
Wheelhouse Top	: 18,40 m
Bridge Deck	: 14,90 m
02 Accommodation Deck	: 12,10 m
01 Accommodation Deck	: 9,30 m
1st Deck	: 6,60 m

CARGO CAPACITY

Dead weight	: 2018 t
-------------	----------

DECK SPACE / STRENGTH

Length	: 37 m
Breath	: 12 m
Total	: 440 m ²
Max deck load	: 1000 t
Deck strength m ²	: 05 t/ m ²

TANK CAPACITY

Fuel oil	: 828 m ³
Drill water	: 816 m ³
Potable water (ship's use)	: 99 m ³
Fresh Water (rig's use)	: 509 m ³
Water in chain lockers	: 160 m ³
Liquid mud (brine)	: 480 m ³

PIPE LINE CONNECTIONS

Fuel oil	: 4" Avery Hardol Male
Potable water	: 5" Hammer Lug Union (Weco) Male
Brine	: 6" Hammer Lug Union (Weco) Male
Cement	: 5" Hammer Lug Union (Weco) Male
Barite	: 5" Hammer Lug Union (Weco) Male
Liquid Mud	: 6" Hammer Lug Union (Weco) Male
Drill water	: 5" Hammer Lug Union (Weco) Male

DRY CARGO CAPACITY

4 pressure tanks for	: 418 t
bulk cement/barite	: 194 m ³
Compressor capacity	: 1278 m ³ /h
Work pressure	: 6,0 bar
Discharging capacity	: 2 x 100 t/h at 90 m head
Pipe and manifold	: 2 x 5"

CARGO PUMPS

Fuel oil	: Allweiler 150-20 m ³ /h at 90 m head
Drill water	: Allweiler 150-80 m ³ /h at 90 m head
Potable water	: Allweiler 150-80 m ³ /h at 90 m head
Brine	: Allweiler 150 m ³ /h at 66,5 m head
Liquid mud	: Allweiler 150 m ³ /h at 66,5 m head

ENGINE AND PROPULSION

Main engines	: Main Engine Wartsila 12V M26 2 x 3720 Kw at 900 rpm
Gear	: 2 Main Gear Scana Volda
Propellers	: Dia. 3400mm Variable pitch in fixed nozzels
Tunnel thruster	: 2 Tunnel Bow Thruster Brunvoll Type FU-63-LTC-1550 2 x 588 Kw / 820 Bhp 1 Tunnel Stern Thruster Brunvoll Type FU-63-LTC-1550 1 x 588 Kw / 820 Bhp
Steering gear	: Hydroster Ship Machinery Works Ltd 2 x HVT265-65/188A
Bollard pull	: Continuous bollard pull 120 t

MANOEUVRING

Joystick	: Fully Integrated, serviceable from various wheelhouse positions
----------	---

AUXILIARIS

Main generator	: - Shaft Generators Stamford 2 x 1724 Kw - Nordhavn A/S Main Genset Type GASI 12-05+07 2 x 250 Kw at 1800 rpm Engine Scania D112 Alternator Stamford HCM4/534
Port/emergency generator	: - Nordhavn A/S Emergency Genset Type GASI 7-06E-3 150Kw/187,5 KVA 3x450V 60Hz Engine Sisudiesel 634 DSBIG U11452 Alternator Stamford UCM274H

DECK EQUIPMENT

Towing / anchor handling winch	: - Fukushjma Ltd Japan 2 x 2490 KN 7m/min. Brake capacity 3922KN Remotely Controlled from bridge - 1 Towing Drum, dia. 900x1800 mm Wire 1500 m / 72 mm - 1 Anchor Handling Drum, dia. 900x1800 mm Wire 1500 m / 72 mm - All drums are declutchable - Automatic tension compensator - 2 Gypsies for 3" and 3 1/4" rig chain
Spooling Device	: 20 t Spooling Device for towing drum
Wire drums	: Fukushjma Ltd japan Dia. 1000x1850mm Wire 1500m / 72mm Cap/speed 7,5 t – 0 – 30 m/min.
Capstan	: 2 SEC Ten Horn Winched Type ECV-50Kn Electric driven / GS-147-878
Crane Type	: Noreq H.S. Marine Type AKB 40/10/2 Cap/Arm : 2t - 10m
Tugger winch	: Fukushima Ltd Japan 2 x 98 KN 30 m/min. Brake capacity 147 KN
Windlass	: Fukushima Ltd Japan Type FF 92B-5 83,8 KN 09 m/min. Brake capacity 403 KN Chain dia. 40mm
Chain stoppers	: 2 Karmoy Winch Forks diam.177 Load limit : for wire with MBL 500 tonnes Operated from bridge and locally U-insert wire/chain 32-102mm
Towing pins	: 2 Karmoy Winch Pins diam.177 Load limit : for ships with bollard pull up to 170 Tonnes Operated from bridge and locally
Stern Roller	: Smith Berger 2500x4000mm SWL 450 T

NAVIGATION EQUIPMENT

1 x Radar, FURUNO Marine ARPA X-band 2 x high resolution color display, radar plotter 21"
1 x Radar, FURUNO Marine ARPA S-band
1 x Radar repeater (slave radar) at aft wheelhouse console
1 x GPS Furuno
1 x Navtex
1 x Echo Sounder Furuno
1 x Speed Log Furuno
1 x AIS
2 x Gyro Compasses Furuno
1 x Magnetic Compass Furuno
1 x Autopilot
1 x Off Course Alarm

DYNAMIC EQUIPMENT

DP System Class II - L3
2 DP Operator Control Workstation (Aft)
2 Signal Processor Unit
1 Independent Backup Joystick Control System
3 Remote control plug connection located at both wing and fore wheelhouse control station
1 Laser reference position system
2 DGPS
2 Wind sensor
2 VRU (vertical reference units)

COMMUNICATION EQUIPMENT

GMDSS Station Area A3
- 1 HF SSB Sailor
- 1 HF DSC sailor
- 3 VHF Sailor
- 2 VHF DSC Sailor
- 3 Emergency VHF
- 1 Inmarsat C Sailor Felcom 16
- 1 Radio telex Felcom 15
- 2 EPIRB
- 2 SART
- 1 Broad 500 data/fax/mail transfer
- 1 Public Address System

ACCOMODATION

1 man cabins, offers	: 2 x 1 = 02
2 man cabins, crew	: 6 x 2 = 12
Passengers, extra	: 2 x 2 = 04 2 x 4 = 08
Hospital	: 1 x 2 = 02
Dispensary	: 1 x 1 = 01
Total number of bunks	: 29

FIRE FIGHTING

FiFi, class I

The fire fighting system consists of the following main components:

- 2 off fire-fighting centrifugal pumps FFS SPF250x350HD capacity: 1742 m³/h head: 11,8 mlc 1800 rpm / 790 Kw
- 2 single/dual flow monitors FFS 1200/300LB joystick controlled from bridge capacity: 1200 m³/h - 10,0 bar throw length – capacity full : 120 m throw length – capacity reduced : 75 m
- 1 foam pump DPV5F 18-100 18 m³/h - 18,5 Kw head: 185 mlc 3420 rpm
- 2 fog monitors for own protection type ABS Water spray system with standard tug nozzles 1061 m³/h at 7,8 bar

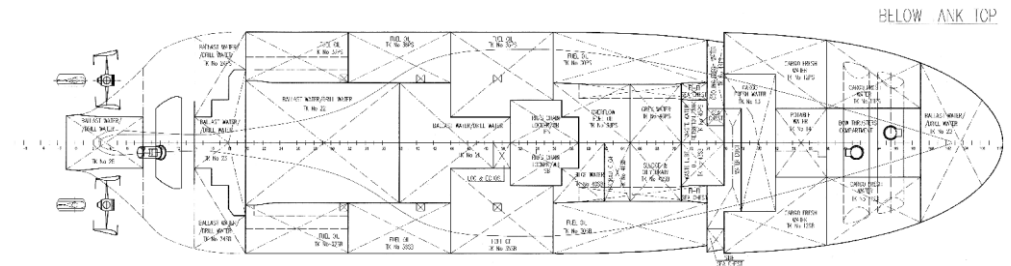
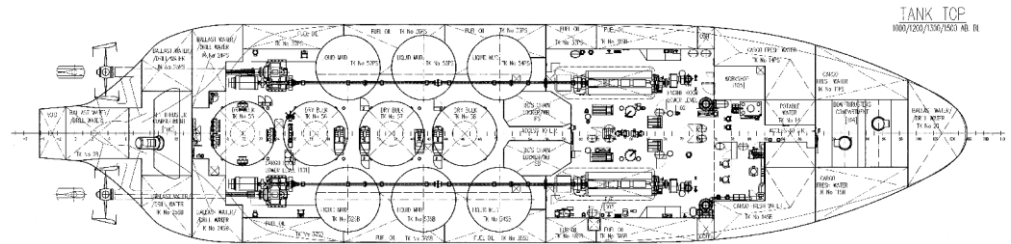
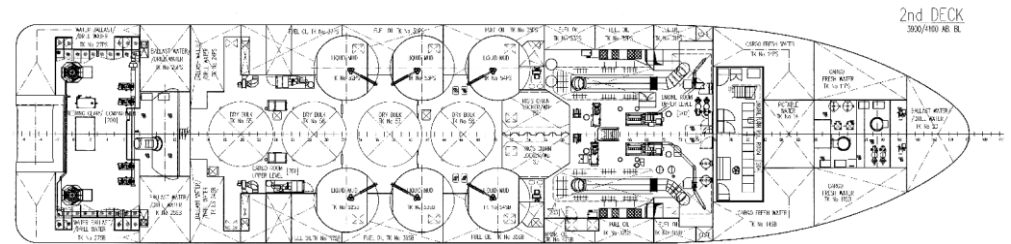
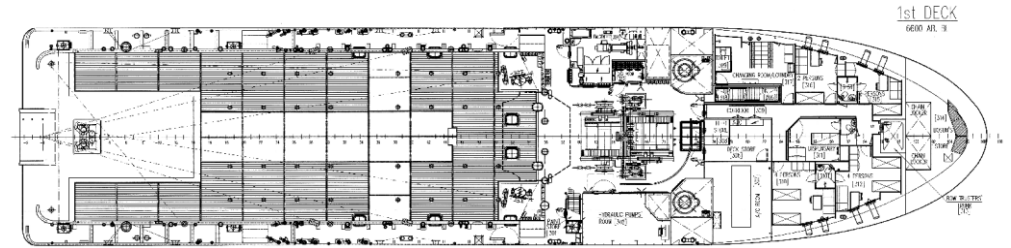
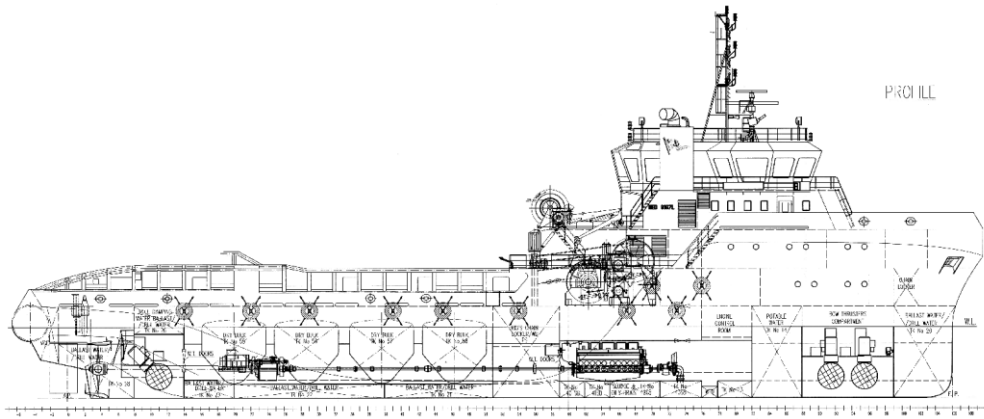
RESCUE AND LIFESAVING EQUIPMENT

1 x Fassmer Rescue Boat Type RR 4.2	Capacity: 06 persons
	Equipped with an electric starting outboard engine (Yamaha 40BHp)
	remote steering from a console in front of helmsman
	Max. Speed: 25 Knts
4 x Liferrafts, capacity 15 persons	
2 x Search Light remotely controlled from bridge	
6 x Lifebuoys provided with strobe lights and lifelines	
1 x Hospital with treatment bench, racks for stretchers, Desk, medicine, poison locker	
1x Dispensary with medical equipments / medicine in accordance with Flag's State and International requirements	

This specification is subject to alteration without prior notice

Ievoli Black - NED 8167L

Anchor Handling Tug Supply Vessel



Whilst care has been taken in the preparation of this document, the data and/or information referred to herein are purely indicative and are not contractually binding. They must be checked with reference to the specific operations and are subject to change. No liability is accepted by the owners for any errors which may exist in this document.



MARNAVI S. P. A.
TRASPORTI MARITTIMI