



IEVOLI ORANGE

AHTS IEVOLI ORANGE

THE SHIP IS AN ANCHOR HANDLING SUPPLY VESSEL, DESIGNED TO GIVE ASSISTANCE TO OFF SHORE UNITS IN BLACK AND CASPIAN SEA.

THE SHIP IS DESIGNED TO CARRY:

- FIRE FIGHTING
- MOB OPERATIONS
- STAND BY DUTIES
- SUPPLY DUTIES
- TOWING/PUSHING
- OIL RECOVERY SHIP
- DISINFECTED LIQUID SEWAGE
- SEWAGE MUD
- FRESH WATER
- GAS-OIL (FLASH POINT ABOVE 60 DEGREES)

DEDICATED TANKS WITH DEEP-WELL PUMPS ARE INSTALLED.

THE SHIP IS ARRANGED WITH DOUBLE BOTTOM AND DOUBLE SKIN IN CARGO AREA, TWIN SCREW / TWIN ENGINE ARRANGEMENT, BOW THRUSTER.

THE SHIP IS REINFORCED FOR NAVIGATION IN BRASH ICE AND TO OPERATE WITH COLD CLIMATE.

AIR CONDITIONING ACCOMODATION FOR 16 PERSONS (CREW + PASSENGERS) IT IS ARRANGED.

MAIN DESCRIPTION

Year Built	: Delivery Sept. 2010
Vessel built	: SELAH Shipyard – Tuzla (Turkey)
Type	: Anchor Handling Tug Supply Vessel, Recovery Ship, Ice Class A1, Shallow draft, Fire Fighting 1 – Water Spraying, Unrestricted Navigation
Classification	: RMRS Class + RINA C Ⓜ
Port of registry	: Taganrog
Flag	: Russian Federation
Call Sign	: UEZR
IMO NR	: 9580704
Certificates	: SOLAS 74 Certificates, Marpol (73/78 and amendments), LSA International Rules, Load Line Convention 69, Telecommunication / Radio International Convention.

MAIN DIMENSIONS

Length o.a.	: 49,98m
Beam	: 13,35m
Summer draught	: 3,25m
Depth to maindeck	: 4,85m
Light Ship	: 1090 Tons
Gross tonnage	: 943Tons
Net tonnage	: 282Tons
DWT	: 400Tons
Displacement	: 1470Tons

DECK SPACE / STRENGTH

Length	: 24m
Breath	: 10m
Total	: 240m ²
Deck cargo/strength m ²	: 5t/m ²
Deck Cargo	: Arrangement for 12 x Containers 20"

HULL AND SUPERSTRUCTURE

STEEL PLATES FOR HULL AND SUPERSTRUCTURE OF "A" GRADE.
BULB PROFILES AND FRAMES/LONGITUDINAL ALSO OF "A" GRADE.
ICE BELTS WITH HS36.

THE VESSEL IS ARRANGED WITH:

- DOUBLE HULL
- FORE PEAK FOR BALLAST.
- TRANSVERSAL COFFERDAMS FOR SEGREGATE CARGO TANKS.
- TWO RUDDERS SPADE TYPE.
- CENTRAL SKEG ON THE AFT.
- FENDERS:
HALF PIPE TYPE IN THE PARALLEL MID-BODY AND ON THE AFT.
RUBBER TYPE FORWARD.
ADDITIONAL TIRE TYPE ON SIDES.

PERFORMANCES

Speed	: 12 knots
Consumptions @ 100%	: 15Tons (Fuel Oil)
Bollard Pull	: 60 Tons

TANK CAPACITY

M.G.O.	: 70 m ³
H.F.O.	: 22 m ³
Luboil	: 7 m ³
Fresh water (ship's use)	: 15 m ³
Ballast water	: 493 m ³
Seawage	: 7,4 m ³
Bilge holding tank	: 11,7 m ³

CARGO PUMPS

Gasoil	: 80 m ³ /h – 8 bars
Fresh water	: 60 m ³ /h – 8 bars
Seawage	: 50 m ³ /h
Mud	: 25 m ³ /h

Each cargo system is arranged with manifold on deck and valves manually operated.

Level indicators, one per cargo tank, above Main deck.

CARGO TANK CAPACITY

M.G.O.	: 94 m ³
Recovered Oil	: 116 m ³
Seawage	: 226 m ³
Seawage Mud	: 90 m ³
Fresh water	: 142 m ³

DECK EQUIPMENT

Deck Crane	: 1 x 2Tons @ 15m boom
Stern Roller	: Ø: 900mm - L: 4,10m, 60 tons
Main Winch	: Ridderinkhof AMW-H-1000 Brake holding drum capacity: 105 Tons Towing drum capacity: 105 Tons Pulling Speed / Slack Speed: Anchor Handling Drum: 5mt/m - 12,5mt/m Towing Drum: 10mt/m - 25mt/m Storage Capacity: Anchor Handling Drum: 850mt x 40mm 750mt x 42mm
Tow wire	: 750m x 42mm
Spare Wire	: 700m x 42mm
Fore Tow Winch	: 1 x 12,5Tons combined with Windlass
Capstans	: 2 x 5Tons each, Mc Gregor
Anchors	: 2 x 1080Kg HHP
Chain	: Fitted Ø: 30mm Q3
Twin Pins	: Mc Gregor
Shark Jaw	: Mc Gregor

MACHINERY

Main engines	: 2 x 1800Kw
Builder	: WARTSILA - Type: 9L20
Propellers	: MAN System - 2 x CPP Type
Main Generator	: SCANIA Type 2 x 240Kw 380V 50Hz
Emergency generator	: SCANIA Type 1 x 35Kw 380V 50Hz
Bow thruster	: Bow thruster of fixed pitch type, 4 blades – 300Hp
Rudder's	: 2 x "Spade" type
Start Air Compressor	: 2 x DENO 30 bar,
Service Coompressor	: 1 x DENO, 7 bar

OTHER MACHINERIES INSTALLED

- 2 x Reverse Gearboxes, each with clutch and stand-by hydraulic pump.
- 2 x Fresh water circulation pump, one stand-by.
- 1 x General service bottle, 300 l/8 bar.
- 1 x Bilge pump, as per Rules and one LP GS pump.
- 1 x Fire pump, (45m³/h , 6 bars).
- 2 x General Service pump type.
- 1 x Ballast pump, 100m³/h x 30 mWG.
- 1 x Gas-oil Purifier with pump.
- 1 x Gas-oil Transfer pump.
- 1 x Oil water separator.
- 1 x Thermal Oil Heating.
- 2 x Starting Air Compressor @ 30bar

2 x Air cylinder 250 lt.

- Sewage treatment unit.
- Steam generator unit
- Fresh water unit (Calorifier + Hydrophor + Sterilizer)

ACCOMODATION

Fully air conditioned / heated. Heating to main bridge Windows
Individual heating – Cooling units to accommodation block.

Cabins	: 4 x 1 bed + 6 x 2 beds
Mess room	: Fitted
Galley	: Fitted
Laundry	: Fitted
Infirmary	: Fitted
Hospital	: Fitted

NAVIGATION EQUIPMENT

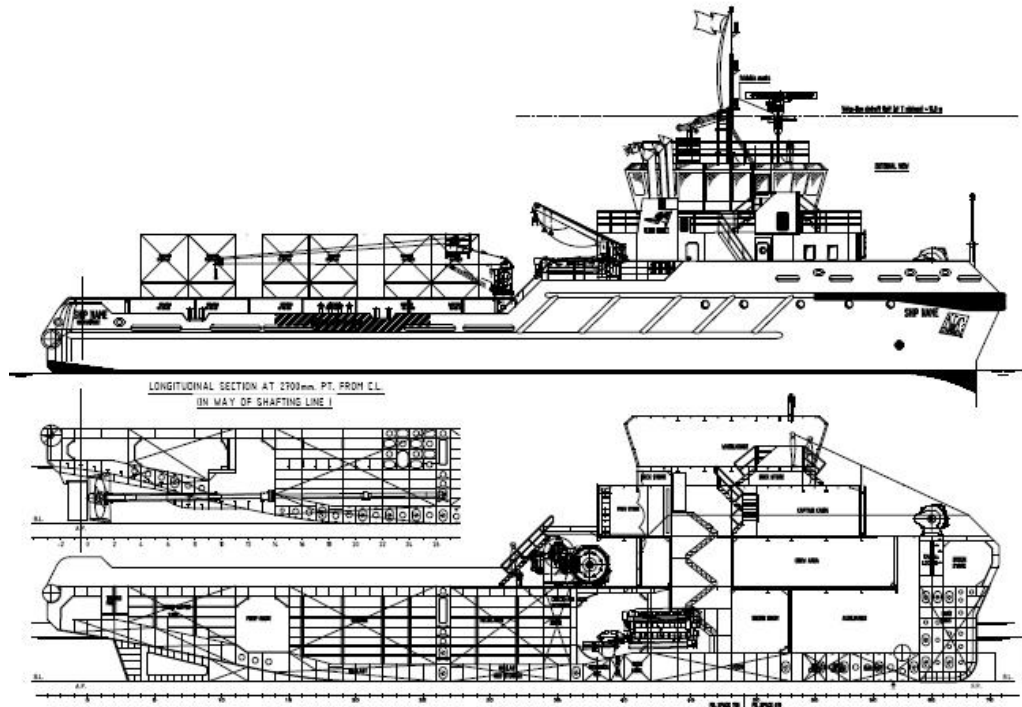
Radar X band	: CONSILIUM SELUX ST-250, 19 1" TFT – (ARPA function, Iceberg & Oils mapping)
Radar S band	: CONSILIUM SELUX ST-340, 12ft (ARPA function)
GPS	: SAAB R4 DGPS
Echo-sounder	: SKIPPER – GDS 101
GMDSS	: Inmarsat C – SAILOR 150W SSB/DSC (Area A1+A2+A3)
SSAS/LRIT	: 40300SSA – 00500 SAILOR mini-C
SART	: 2 x SART SAILOR SART II
Speed log	: CONSILIUM SAL R1a
Wind Speed/Direction	: DEIF
Gyro pilot	: SPERRYNAVIPLOT 4000
Navtex	: ICS NAVTEX NAV 7
Gyro compass	: SPERRY NAVIGAT X MK1 (type: G-TML)
AIS	: SAAB R4 AIS
Magnetic Compass	: SPERRY NAVIPOL 1
Radio VHF	: 2 x SAILOR RT5022 DSC
Radio VHF Portable	: 3 x SAILOR 40352B
VHF Portable (Ship use)	: 2 x SAILOR sp3530 – Intrinsically safe
Inmarsat C	: 2 x SAILOR TT3000E
EPIRB	: SAILOR TT4062-D (406Mhz)
Weather Chart Plotter	: FURUNO
Satelite Phone/ Fax	: Inmarsat C
P.C.	: Fitted (Printer, Scanner, Copies machines)

OTHER INFORMATION

Frigo Capacities	: Domestic Type. Freezers: 3 x 280lt, Refrigerators: 3 x 350lt
F.R.B.	: 1 x 6 persons, Length: 4,45m, Eng: 25 Hp
Life Rafts	: 2 x 16 pers. RFD
Dispersants	: 2 x 5,0 m, 5 nozzles/each, sidely fitted Booms

This specification is subject to alteration without prior notice

Ievoli Orange – Anchor Handling Tug Supply Vessel



Whilst care has been taken in the preparation of this document, the data and/or information referred to herein are purely indicative and are not contractually binding. They must be checked with reference to the specific operations and are subject to change. No liability is accepted by the owners for any errors which may exist in this document.



MARNAVI S. P. A.
TRASPORTI MARITTIMI

