



## IEVOLI SHUTTLE

### S/V Rec-oil "IEVOLI SHUTTLE"

THE SHIP IS A SUPPLY VESSEL, DESIGNED TO GIVE ASSISTANCE TO OFF SHORE UNITS IN MED, BLACK AND CASPIAN SEA.

THE SHIP IS DESIGNED TO CARRY:

- DISINFECTED LIQUID SEWAGE
- SEWAGE MUD
- FRESH WATER
- GAS-OIL (FLASH POINT ABOVE 60 DEGREES)
- OIL RECOVERY SHIP

DEDICATED TANKS WITH DEEP-WELL PUMPS ARE INSTALLED.

THE SHIP IS ARRANGED WITH DOUBLE BOTTOM AND DOUBLE SKIN IN CARGO AREA, TWIN SCREW / TWIN ENGINE ARRANGEMENT, BOW THRUSTER, BULBOUS BOW AND FORWARD SUPERSTRUCTURE.

THE SHIP IS REINFORCED FOR NAVIGATION IN BRASH ICE AND TO OPERATE WITH COLD CLIMATE.

AIR CONDITIONING ACCOMODATION FOR 10 CREW IT IS ARRANGED.

### MAIN DESCRIPTION

Built : Oct. 2009  
 Builder : SELAH Shipyard – Tuzla (Turkey)  
 Owner : Marnavi S.p.A. - Napoli  
 Classification : Rina Class  
 RINA C<sub>8</sub>, Supply Vessel, oil recovery ship, Special navigation – Mediterranean, Black and Caspian Sea, Ice class 1B, Clean Sea, Clean air, in water survey.  
 Port of registry : Naples n. 559  
 Flag : Italian  
 Rina Number : 86826  
 IMO Number : 9564437  
 Call Sign : I.I.W.C.2

Certificates : SOLAS 74 Certificates, Marpol (73/78 and amendments), LSA International Rules, Load Line Convention 69, Telecommunication / Radio International Convention.

### MAIN DIMENSIONS

GRT : 532 tons  
 NET : 159 tons  
 Loa : 45,85 m  
 Lbp : 42,85 m  
 Breath Moulded : 9,97 m  
 Summer Load draft : 2,80 m  
 Depth Moulded : 4,00 m  
 Light Ship Weight : 612 tons  
 Deadweight : 350 tons (at summer draft)  
 Deck Cargo Area : 2 x Containers 20"  
 Deck Cargo strength : 2 t/m<sup>2</sup>

### HULL AND SUPERSTRUCTURE

STEEL PLATES FOR HULL AND SUPERSTRUCTURE OF "A" GRADE.  
 BULB PROFILES AND FRAMES/LONGITUDINAL ALSO OF "A" GRADE.  
 THE VESSEL IS ARRANGED WITH:

- DOUBLE HULL
- FORE PEAK FOR BALLAST.
- TRANSVERSAL COFFERDAM BETWEEN GAS-OIL AND MUD TANKS AND BETWEEN SEWAGE/FRESH WATER.
- TWO SPADE RUDDERS.
- CENTRAL SKEG ON THE AFT.
- FENDERS (HALF PIPE TYPE) IN THE PARALLEL MID-BODY AND ON THE AFT.

### PERFORMANCES

Speed : 10 knots  
 Consumptions (80%) : About 240Kg/h (Diesel Oil)

### REC-OIL EQUIPMENT

REC-OIL CAPACITY : 530 m<sup>3</sup> (multipurpose tanks)  
 INFLATABLE OIL BOOM : 200 mt.  
 SKIMMERS : Hydraulic Skimmers for Oil Recovery Transfer  
 SWEEPING ARMS : In Both Sides  
 DISPERSANT : Chemical Dispersant of Approved Type  
 OIL TRANSFER PUMPS : Fitted

AND EVERYTHING NECESSARY FOR THE EMERGENCY RECOIL OPERATIONS.

### CAPACITIES

Fresh water : 100 m<sup>3</sup> – 2x50  
 Sewage Mud : 88 m<sup>3</sup> – 2x44  
 Gasoil (Pf > 60°) : 178 m<sup>3</sup> – 2x89  
 Recovery oil : 530 m<sup>3</sup> (multipurpose tanks)  
 Sewage : 160 m<sup>3</sup> – 2x80

Ballast : 344 m<sup>3</sup>  
 Fresh water (for ship) : 11 m<sup>3</sup>  
 Gasoil (for ship) : 32 m<sup>3</sup>  
 Dirty Oil : 3,60 m<sup>3</sup>  
 Sludge : 2,70 m<sup>3</sup>  
 Bilge : 3,60 m<sup>3</sup>  
 Oily bilge Tank : 5,21 m<sup>3</sup>  
 Grey water : 4,10 m<sup>3</sup>

### MACHINERY

Main engine's : 2 x 559 Kw  
 Builder : CATERPILLAR - Type: C32 ALERT  
 Shafting : 2 shafts x 4 blades propellers fix pitch type/each  
 Generator's : 2 x 150 Kw SCANIA Set  
 Emergency Batteries 15 Kw  
 Bow thruster : Bow thruster of fixed pitch type, 4 blades, driven by an hydraulic motor fed by an hydraulic pump driven by one of two main engines, 80Kw – 1,5 tons  
 Rudder's : 2 x "Spade" type  
 Service compressor : 2 x ATLAS Copco 8,5 bar, 5kw, 40m<sup>3</sup>/h  
 Air Draier : 1 x ATLAS Copco

### OTHER MACHINERIES INSTALLED IN ENGINE ROOM

2 x Reverse Gearboxes, each with clutch and stand-by hydraulic pump.  
 2 x Fresh water circulation pump, one stand-by.  
 1 x General service bottle, 300 l/8 bar.  
 1 x Bilge pump, as per Rules and one LP GS pump.  
 1 x Fire pump, (45m<sup>3</sup>/h , 6 bars).  
 1 x General Service pump (identical to fire pump) of HP type.  
 1 x Ballast pump, 100m<sup>3</sup>/h x 30 mWG.  
 1 x Gas-oil Purifier with pump.  
 1 x Gas-oil Transfer pump.  
 1 x Oil water separator.

One diesel driven pump is on board for emergency service.  
 Each cargo system is arranged with manifold on deck and valves manually operated.  
 Level indicators, one per cargo tank, above Main deck.

### EQUIPMENTS INSTALLED IN THE FORE EQUIPMENT ROOM

- Hot water boiler (250l) with 3 x 6 electric heaters + circulating pump.
- Emergency fire pump, as per Rules, driven by a diesel engine, portable type.
- One Supply and one exhaust fan.
- Sewage treatment unit.
- Steam generator unit GMT12 (84 Kw)
- Fresh water unit (Calorifier + Hydrophor + Sterilizer)

### ACCOMODATION

Cabins : 2 x 1 bed + 4 x 2 beds

Mess room : Fitted  
 Galley : Fitted  
 Laundry : Fitted  
 Hospital : Fitted

### DECK EQUIPMENT

Capstan / Windlass : 2 x 3 ton (stern) + 2 x 3 ton windlass / capstan  
 Crane : 1 x 2 ton at 10m  
 F.R.B. : 1 x 6 persons, Length: 4,45m, Eng: 25 Hp  
 Life Rafts : 2 x 10 pers. RFD

### NAVIGATION EQUIPMENT

Radar X band : CONSILIUUM SELUX ST-250, 19 1" TFT – (ARPA function)  
 Radar S band : CONSILIUUM SELUX ST-340, 12ft (ARPA function)  
 GPS : SAAB R4 DGPS  
 Echo-sounder : SKIPPER – GDS 101  
 GMDSS : Inmarsat C – SAILOR 150W SSB/DSC (Area A1+A2+A3)  
 SSAS : 403000SSA – 00500 SAILOR mini-C  
 SART : 2 x SART SAILOR SART II  
 Speed log : CONSILIUUM SAL R1a  
 Wind Speed/Direction : DEIF  
 Gyro pilot : SPERRYNAVIPILOT 4000  
 Navtex : ICS NAVTEX NAV 7  
 Gyro compass : SPERRY NAVIGAT X MK1 (type: G-TML)  
 AIS : SAAB R4 AIS  
 LRIT : (included in GMDSS)  
 Magnetic Compass : SPERRY NAVIPOL 1  
 Radio VHF : 2 x SAILOR RT5022 DSC  
 Radio VHF Portable : 3 x SAILOR 40352B  
 VHF Portable (Ship use) : 2 x SAILOR sp3530 – Intrinsically safe  
 Inmarsat C : 2 x SAILOR TT3000E  
 EPIRB : SAILOR TT4062-D (406Mhz)  
 Weather Chart Plotter : FURUNO  
 Satellite Phone : Inmarsat C  
 Satellite Fax : Inmarsat C  
 P.C. : Fitted (Printer, Scanner, Copies machines)

### OTHER INFORMATION

Frigo Capacities : Domestic Type. Freezers: 2 x 220lt, Refrigerators: 2 x 220lt

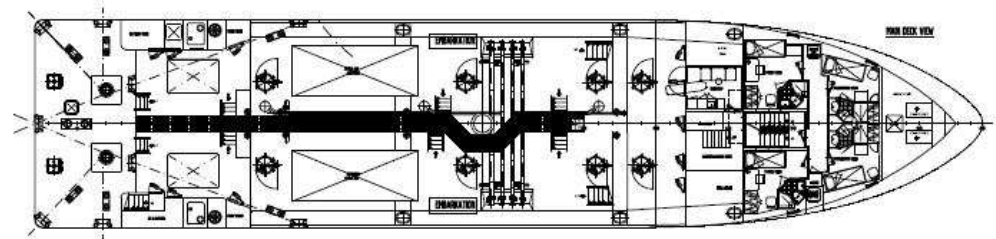
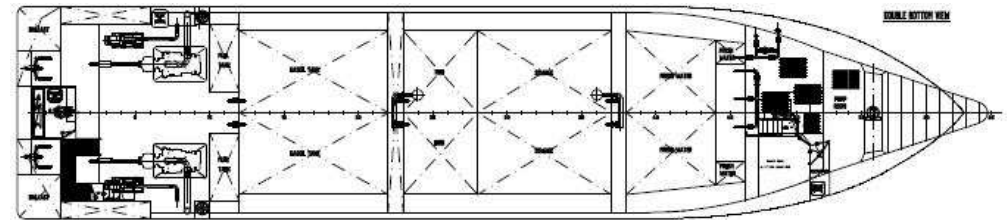
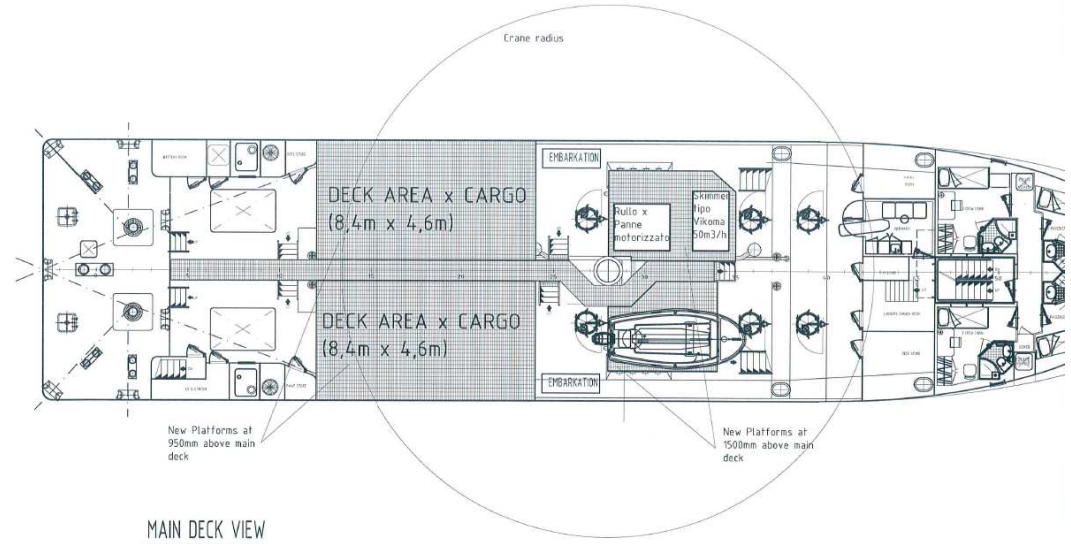
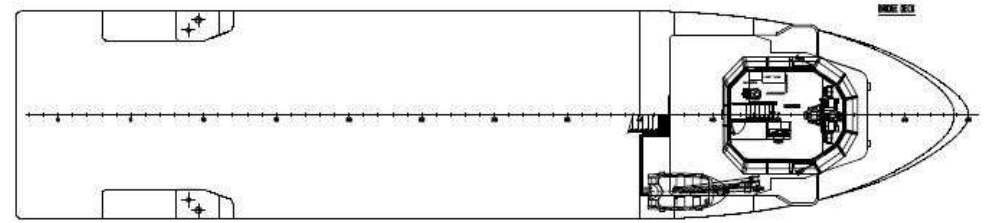
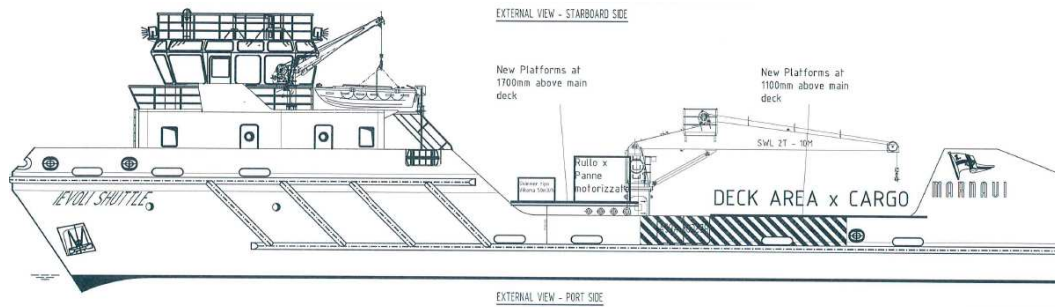
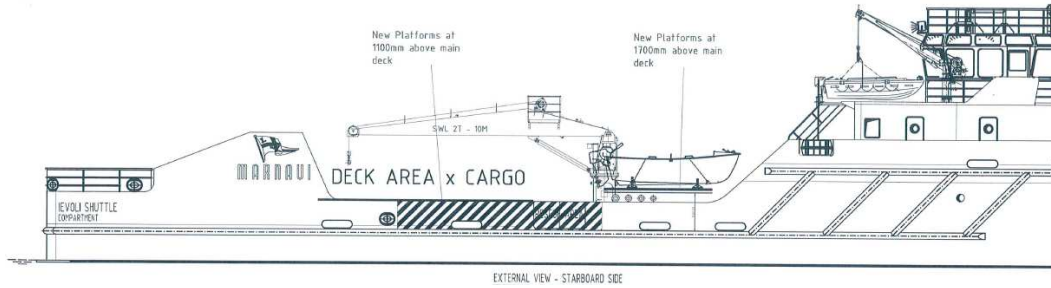
*This specification is subject to alteration without prior notice*



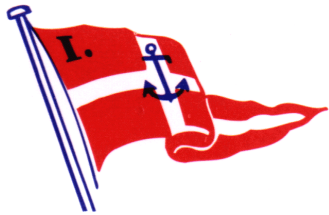
**MARNAVI OFFSHORE S.r.l.**

**OPERATION & TECHNICAL MANAGER**

# Ievoli Shuttle – Rec-oil Supply Vessel



Whilst care has been taken in the preparation of this document, the data and/or information referred to herein are purely indicative and are not contractually binding. They must be checked with reference to the specific operations and are subject to change. No liability is accepted by the owners for any errors which may exist in this document.



**MARNNAVI** S. P. A.  
TRASPORTI MARITTIMI